

Get Involved!

Join the CRM Recovery newsletter for project updates

www.criticalrawmaterialrecovery.eu

[@CRMRecovery](https://twitter.com/CRMRecovery)

criticalrawmaterialrecovery@wrap.org.uk

Project Schedule

Trials tender launched February 2016

Trials start June 2016

Trials completion June 2018

EU policy recommendations March 2019

For more information on tenders, trials and policy work see
www.criticalrawmaterialrecovery.eu/

Project Partners



Supported by

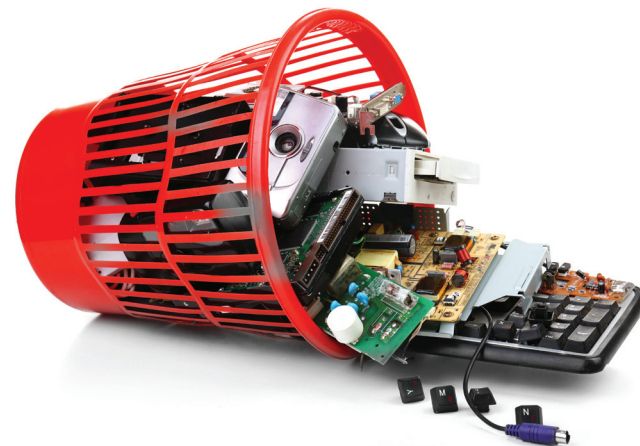
Innovate UK



Ariennir yn Rhannol gan
Lywodraeth Cymru
Part Funded by
Welsh Government



With the contribution of the
LIFE financial instrument of
the European Community



www.criticalrawmaterialrecovery.eu



**PROJECT
TARGET
RECOVERY
OF CRMS**

5%
↑
2020

20%
↑
2030



**CRITICAL
RAW
MATERIAL**

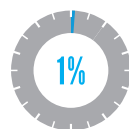
With the contribution of the LIFE financial
instrument of the European Community



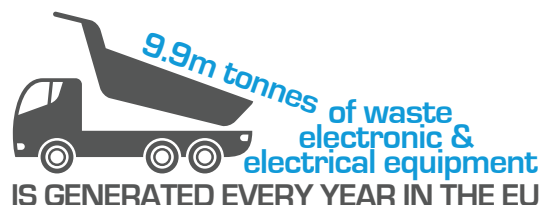
THE PROBLEM

Huge quantities of waste electronic and electrical equipment (WEEE) are disposed of each year in the European Union. Although certain valuable materials are recovered in the recycling of waste electronic equipment (e.g. aluminium, copper), many “critical raw materials” (CRM) are not, and are lost from the system **forever...**

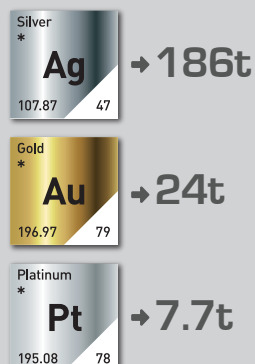
WEEE CATEGORIES



ESTIMATED
CRM
RECOVERY FROM
WEEE



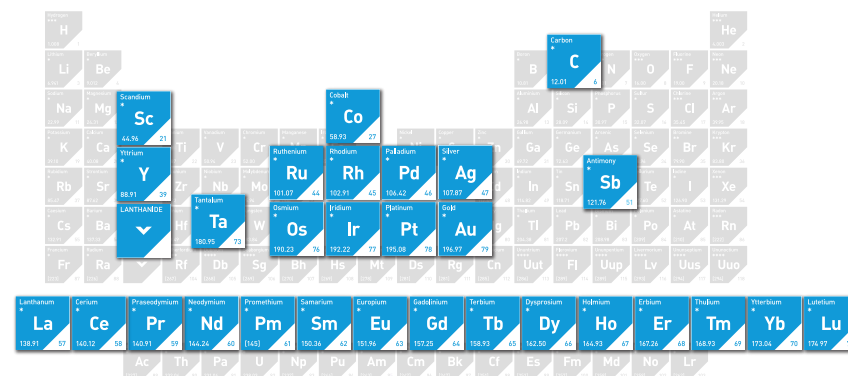
POTENTIAL PRECIOUS METALS IN EU WEEE per annum



WHAT ARE CRMs?



Raw Materials classified by the European Commission as “Critical” due to their high economic importance to the EU combined with a high risk associated with their supply.



THE SOLUTION



TRIALS

Collection of WEEE and recovery/recycling of the CRMs in four countries via tender.



AIM

Aim of the combined trials is to collect a minimum of 100 tonnes of WEEE and to increase recovery of target CRMs by 5% by 2020.



POLICY

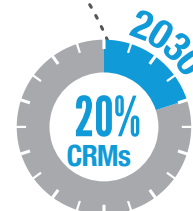
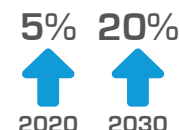
The project will focus on developing policy recommendations using trials and trial evaluation data, and will also develop an infrastructure plan to deliver the most effective resilience for EU businesses and the wider EU economy.

TRIALS

START
June 2016
COMPLETE
June 2018



PROJECT
TARGET
RECOVERY
OF CRMS



WORTH
€381
MILLION



€16m



€150m



€215m



With the contribution of
the LIFE financial
instrument of the
European Community

Get involved!

Join the CRM Recovery newsletter for project updates

www.criticalrawmaterialrecovery.eu

@CRMRecovery

criticalrawmaterialrecovery@wrap.org.uk

CRM
RECOVERY

**CRITICAL
RAW
MATERIAL**